



AVAILABLE SPACE: 4,010 RSF 3,772 USF

Retail Space (former restaurant)
221 S. Washington Street
Naperville, IL 60540
FOR LEASE

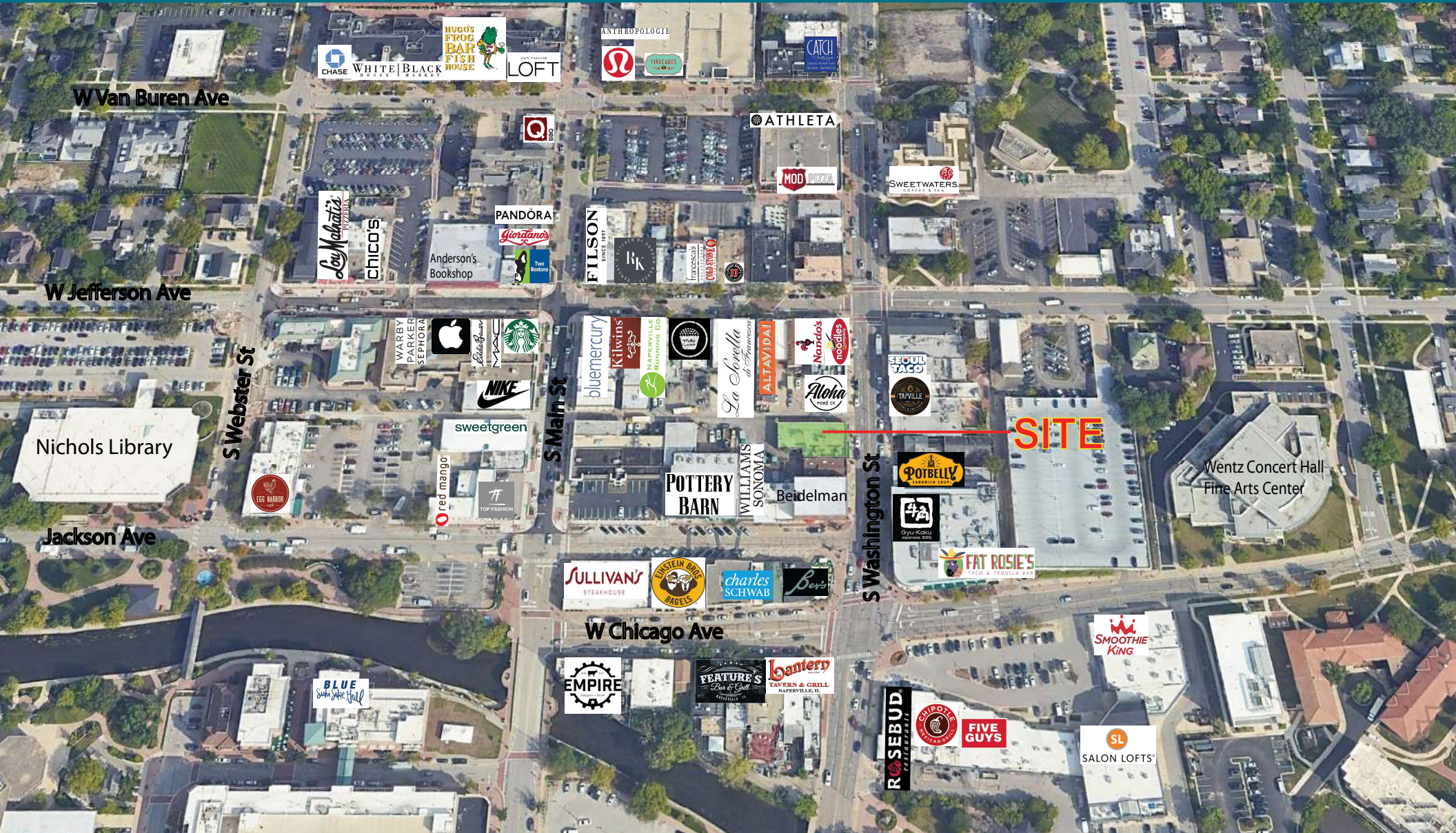


CONTACT: NOEL ESCALONA nescalona@escalonare.com **847.460.0096**
JOE CONROY joeconroy450@gmail.com **224.216.9817**

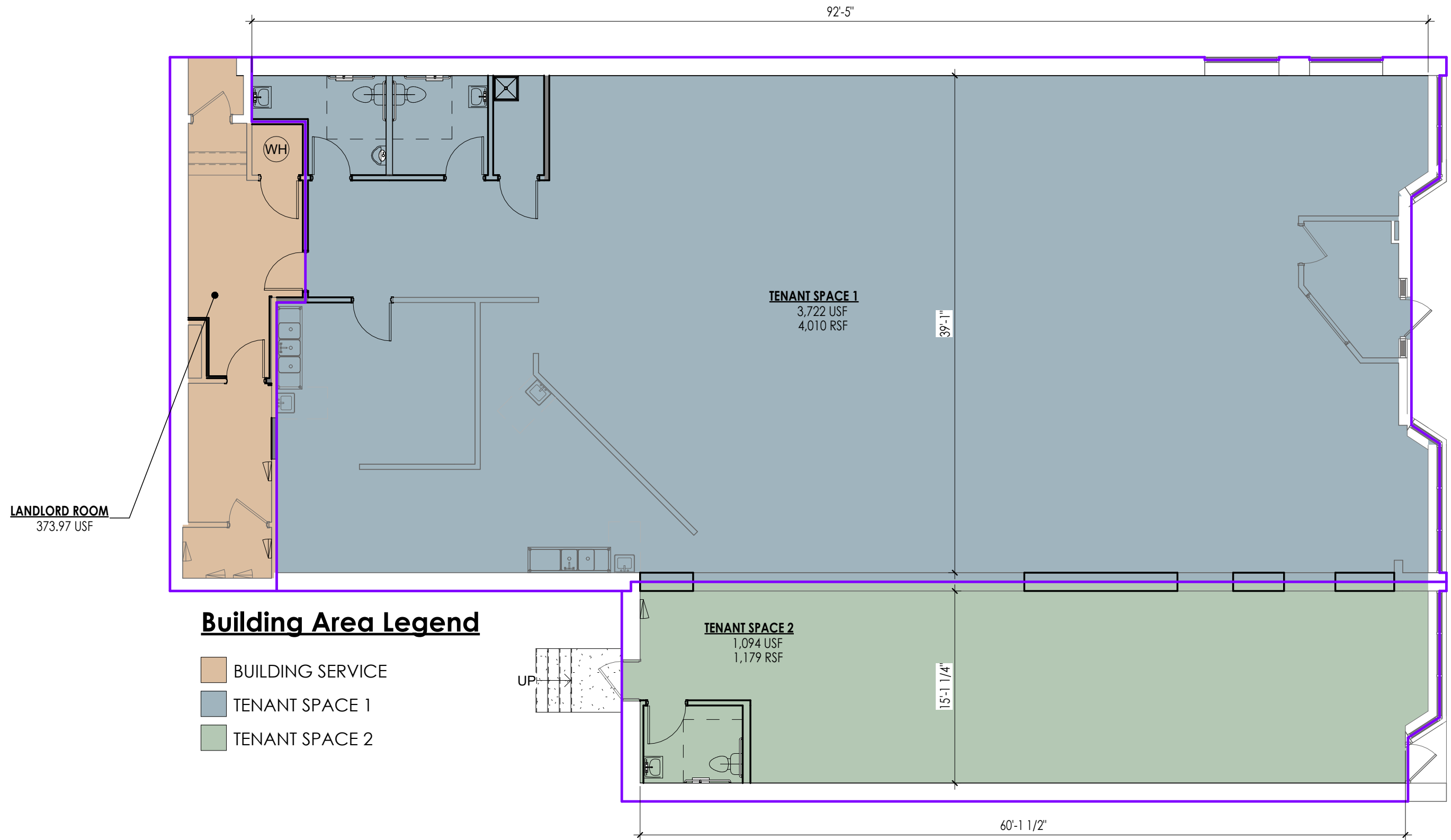
This document has been prepared solely for informational purposes. While the information contained herein is from reliable sources, it has not been independently verified. The document is provided subject to errors, omission and changes in information.

Available Retail Space

221 S. Washington Street
Naperville, IL 60540



This document has been prepared solely for informational purposes. While the information contained herein is from reliable sources, it has not been independently verified. The document is provided subject to errors, omission and changes in information.



LANDLORD ROOM
373.97 USF

Building Area Legend

- BUILDING SERVICE
- TENANT SPACE 1
- TENANT SPACE 2

TENANT SPACE 1
3,722 USF
4,010 RSF

TENANT SPACE 2
1,094 USF
1,179 RSF

PROPOSED DEMISING WALLS

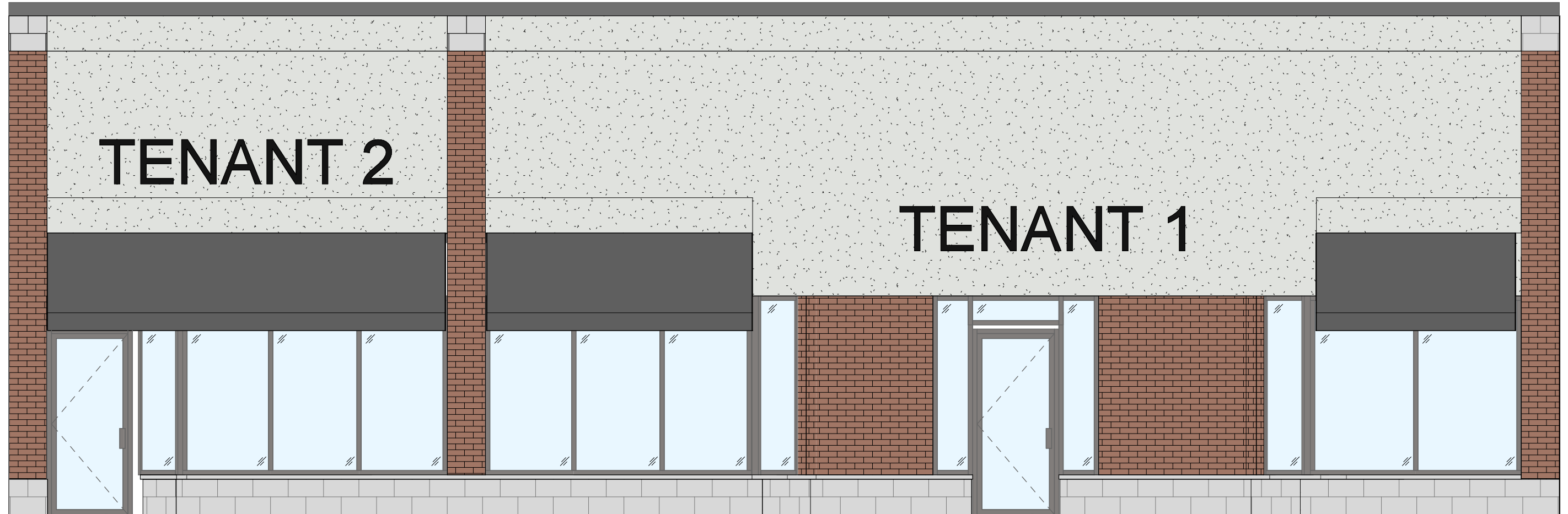
1/8" = 1'-0"



PROPOSED DEMISING WALLS

221 S WASHINGTON ST
221 S WASHINGTON ST,
NAPERVILLE, IL 60540

DATE 08.13.2024
REV#
PROJ # 2414.001.000
SHEET SD-1.0



PROPOSED WEST ELEVATION

1/4" = 1'-0"

PROPOSED WEST ELEVATION

221 S WASHINGTON ST

221 S WASHINGTON ST,
NAPERVILLE, IL 60540

DATE 08.26.2024

REV#

PROJ # 2414.001.000

SHEET SD